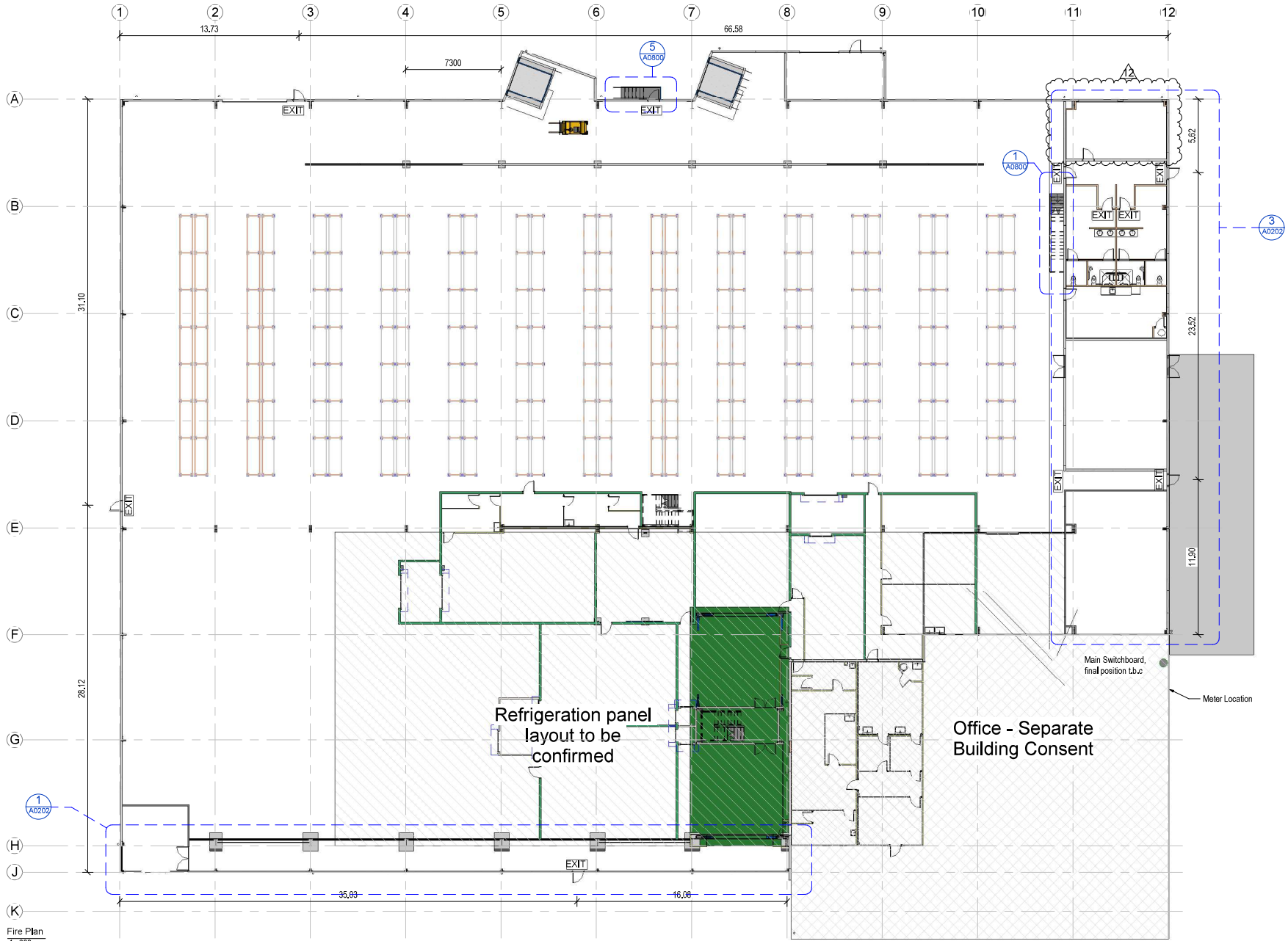


ELEVATION KEY



Fire Plan
1:200



PROJECT

Arch

NZ Dairy Collaborative Group
Infant Formula Blending Plant

9 Ashford Ave., Ashburton

Rev#	Amendments	Date	SCALE	As indicated@	JOB #
12	Mods to operational fitout	28/07/16	A2	C. White	12412
			APPROVED BY	DATE	
			A. Cloake	23/01/16	
				REV	12
				Ground Floor	A0200
Please note: All dimensions to be verified on site					
					Page size A2

Thompson Engineering 2002 Ltd | PO Box 2081, Washdyke - Timaru | 85 Meadows Road - Timaru
PH 0800 688 716 | F (03) 688 7168 | www.thompsonengineering.co.nz | design@thompsonengineering.co.nz

All Drawings property of Thompson Engineering 2002 Ltd